

ALLEN'S ADD'N.	24
APPRAISER'S REPLAT 1880	6
BACHMAN'S ADD'N.	24,26
BALDWIN'S SUB-DIV.	5
BENNER'S SUB-DIV.	18
BIHN'S, A. ALTERATION	16
BREWER'S ADD'N.	20
BROOKWOOD PARK SUB-DIV.	24
BURKHART'S RIVERSIDE ALLOT.	26
CRONISE ADD'N.	17
EASTLAND PARK SUB-DIV.	33
EGBERT PARK	17
ETZKORN, HENRY W. SUB-DIV.	30
FULTON COURT SUB-DIV.	22
GIBSON'S ADD'N.	24-26
GIBSON RUN SUB-DIV.	25
GLENN VIEW SUB-DIV.	31-A
GOODSELL'S ADD'N.	6
GRANDVIEW SUB-DIV.	30-B
GRAMMES, F.W. ET AL REPLAT	14,16
GRAY'S SUB-DIV.	24
GREEN ACRES SUB-DIV.	30-A
GREENFIELD HEIGHTS SUB-DIV.	12-A
GROSS ADD'N.	20,21,23
HAMPDEN PARK ADD'N.	32
HEDGES-BOYER CITY PARK	12
HEDGES' ESTATE	6,9,10,12,12-A,15,16,17,18,19,22,24,25
HEDGES' ESTATE, BLOCK "N"	20
HEDGES' SECOND SOUTHERN ADD'N.	14,15,16
HEDGES' SUB-DIV., LOTS 1 & 2, BLOCK "D"	13,15
HEILMAN'S SECOND ADD'N.	5,8
HEILMAN'S, JOHN ADD'N.	5
HEILMAN'S SUB-DIV.	5,7,22,23
HEILMAN'S SUB-DIV., O.L. 627, BLOCK "Q"	8
HELLER & GRAMMES SUB-DIV.	4
HEMING'S RESURVEY	1,2,3,4,5,7,13,14
HERRICK COURT SUB-DIV.	17
HERTZER'S SUB-DIV.	7
HICKORY HILL SUB-DIV.	3
HILB REPLAT 1880	7,14,16
HOUCK'S ADD'N.	3
HUDDLE'S ADD'N.	26
KAULL'S & GLENN'S	31
KENDIG SNEATH ET AL (REPLAT 1880)	3,13
KIMBLE'S SUB-DIV.	23
LAND APPRAISER'S 1890 (JOHN L. JOMIS ET AL)	2
LEWIS SUB-DIV.	11,12
LOOMIS, MYERS ET AL	6
LOT "H" (FORMERLY LINCOLN PARK ADD'N.)	31
THE MAPLES ADD'N.	31
MATHIAS, J.B. REPLAT 1ST & 2ND	13
MECHANICSBURG ADD'N.	28
MOHAWK HILLS SUB-DIV.	29
MORLOCK'S, C. REPLAT	11
NEWSON ET AL	17,31
OAKLEY SUB-DIV.	34
ORCHARD PARK SUB-DIV.	31
PINECREST SUB-DIV. REPLAT	35
PLEASANT VALLEY SUB-DIV.	30-A
REMMELE'S ADD'N.	24
REPLAT OF 1880	16,19,22,27,30,31
ROCK VIEW ADD'N.	10
SACKSTEDER'S, A.H. ADD'N.	9,10
SACKSTEDER'S, A.H. SECOND ADD'N.	19
SACKSTEDER'S REPLAT	19
SCHEIB'S ADD'N.	5,7
SCHEIB'S ET AL	5
SCHEIBER'S, JACOB SUB-DIV., LOT 247	13
SCHEIBER'S SUB-DIV.	6,8,9
SCHONHARDT ADD'N.	7
SHEELY'S REPLAT	31
SMITH'S SUB-DIV.	3
SOUTHEAST VISTA SUB-DIV.	34
SOUTH SIDE ALLOT.	20,21,22,23
SOUTH VIEW ACRES	19
SOUTHVIEW HEIGHTS SUB-DIV.	25
SOUTHWOOD ACRES	19
SPAYTH'S ADD'N.	30
SPRINGDALE ADD'N.	26,27
SUNNY SLOPE SUB-DIV.	26
SUNNY SLOPE ADD'NS 1,2,3 & 4	36
WALKER'S ADD'N.	11,12A
WEIRICK'S ADD'N.	13
WESTVIEW SUB-DIV.	30-B
VALLEY VIEW PARK	34
ST. FRANCIS ANNEXATION	37
REPLAT 1890 LOT 10 GROSS ADD.	20
SOUTH SEVILLE SUB. DIV.	31-B
Sycamore Woods	26H
SWANAGE SUBDIVISION	38

Hedges Estate
Case 87
- 39

Home View
Addition
- 34

Mohawk
Estate
- 29-A

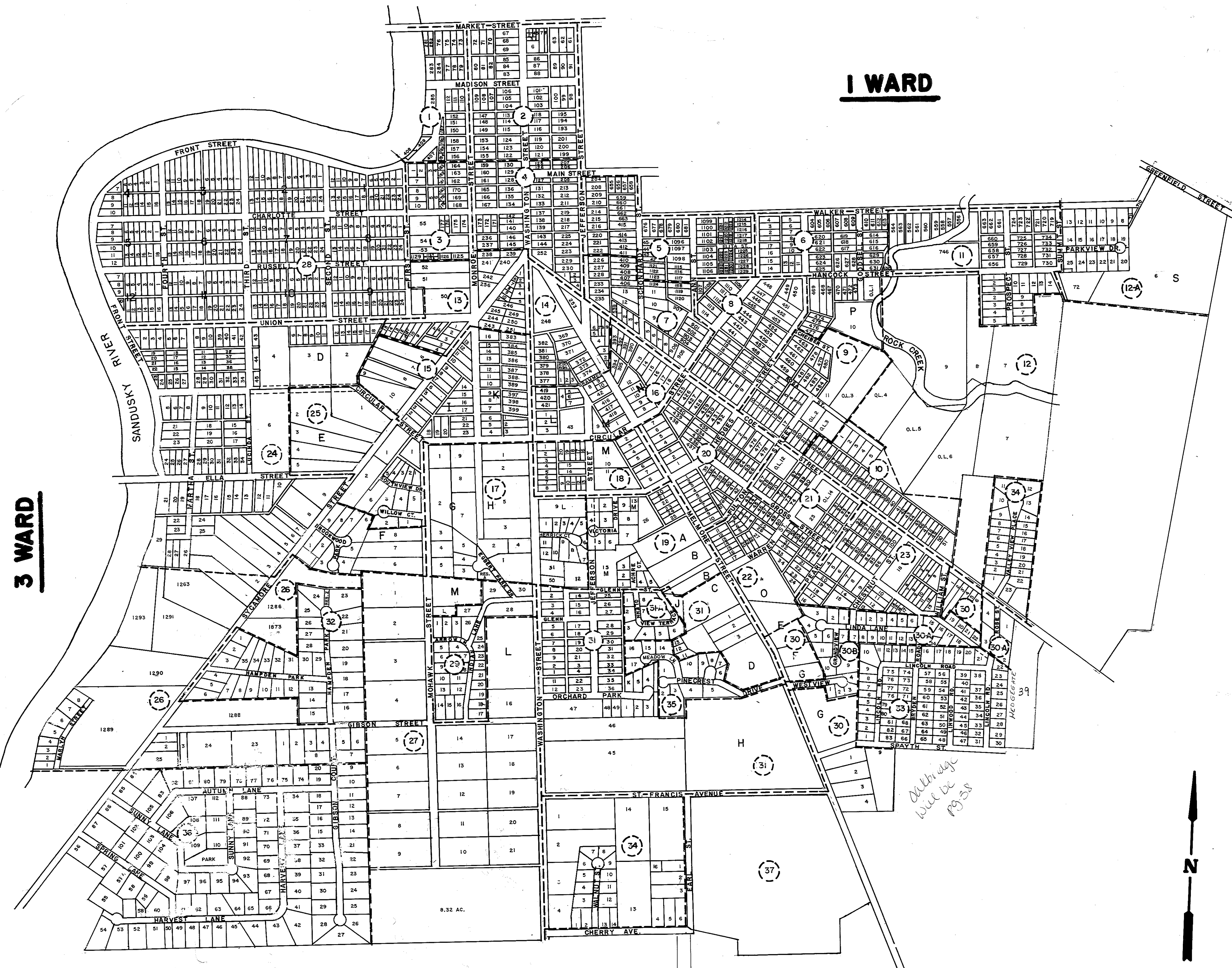
Rosa
Overlook
- 10

St. Francis
Annexation
- 30

Bishop
Annexation
- 40

Oakley
Meadows
Condos
- 40

Monroe
St. Condo
- 2



FOURTH WARD, TIFFIN, OHIO

REDRAWN 5/21/80

SEPARATES PLAT PAGES
PLAT NUMBER
101111